



# GMT MONTHLY MEMBERSHIP PROGRESS REPORT

Results as of: 10/31/2019

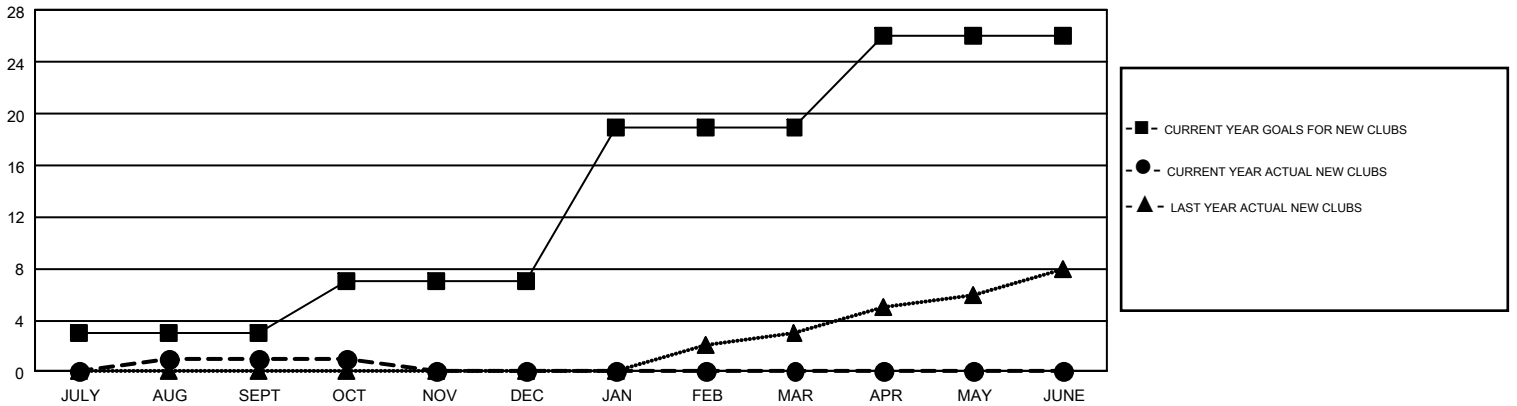
## GMT Constitutional Area 1, Group F

GMT: OPEN

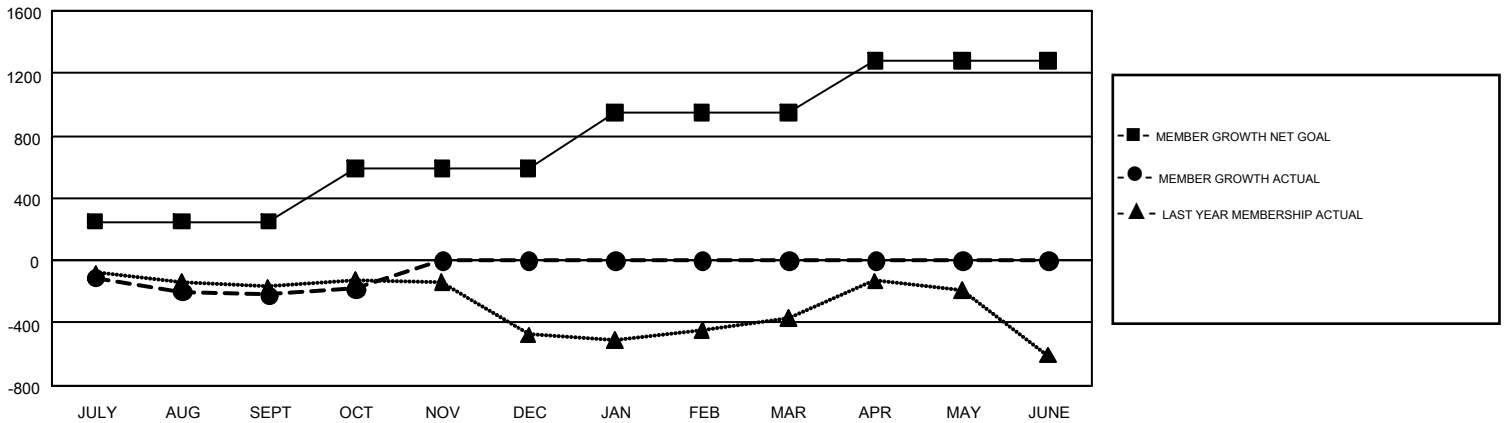
REPORT DOES NOT INCLUDE CLUBS IN UNDISTRICTED AREAS.

Clubs				Members			
RESULTS FOR 2019-2020				RESULTS FOR 2019-2020			
QUARTER	NEW CLUB GOAL	NEW CLUBS	DROPPED CLUBS	QUARTER	MEMBER GROWTH NET GOAL	MEMBER GROWTH ACTUAL	DROPPED MEMBERS ACTUAL (including transfers)
JULY/AUG/SEPT	3	1	5	JULY/AUG/SEPT	250	555	691
OCT/NOV/DEC	4	0	3	OCT/NOV/DEC	340	236	174
JAN/FEB/MAR	12	0	0	JAN/FEB/MAR	356	0	0
APR/MAY/JUNE	7	0	0	APR/MAY/JUNE	337	0	0

GOALS AND ACTUAL NEW CLUBS CUMULATIVE



GOALS AND ACTUAL MEMBERS CUMULATIVE



DROPPED CLUBS: 8	283 CLUBS OF 913 ADDED 1 OR MORE NEW MEMBERS	<b>GENDER DISTRIBUTION</b> MALE 15,950 (63.50%) FEMALE 9,168 (36.50%)
<b>DROPPED MEMBERS</b> DECEASED 116 CLUB CANCELLED 27 OTHER 722 <b>TOTAL 865</b>	<a href="#">CLICK HERE FOR CUMULATIVE MEMBERSHIP DATA</a>	TOTAL FAMILY UNIT MEMBERS 4,446 FAMILY MEMBERS PAYING HALF DUES 2,307